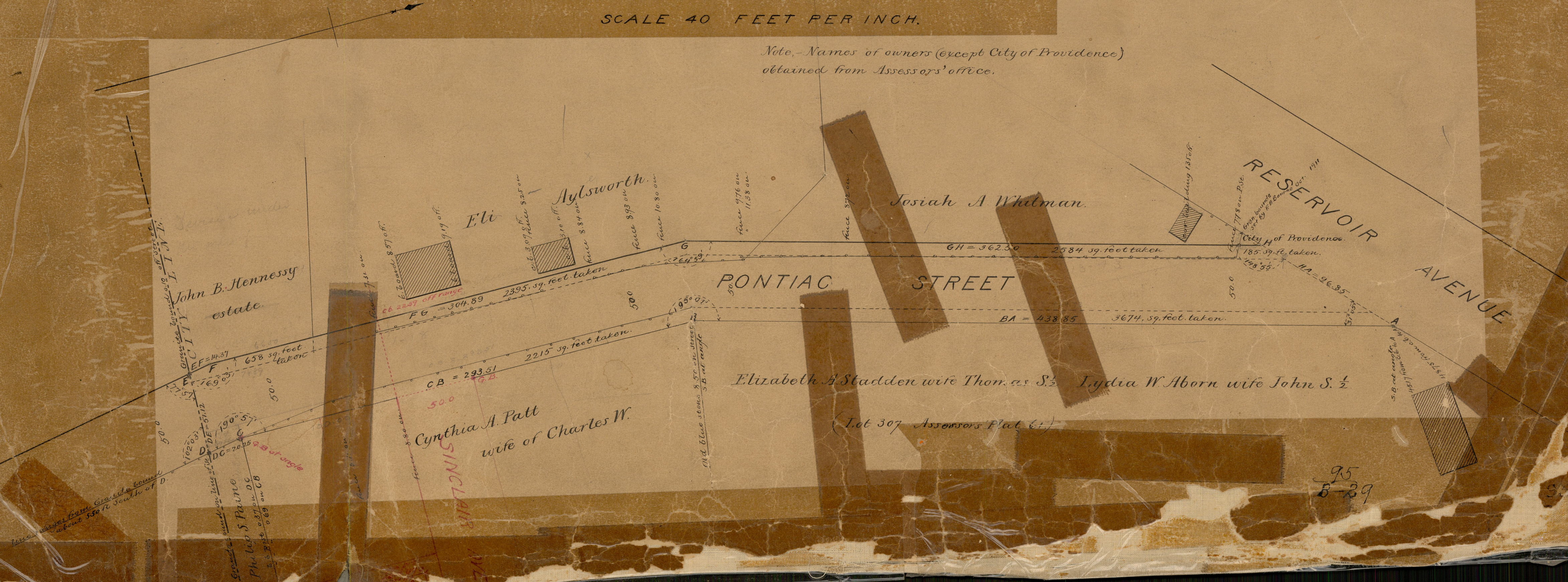


PLAT OF
PONTIAC STREET
 AS WIDENED AND LAID OUT
 FROM RESERVOIR AVE. TO THE CITY LINE
 SCALE 40 FEET PER INCH.

Note. - Names of owners (except City of Providence)
 obtained from Assessors' office.



BOARDS OF
 RECORDS
 PONTIAC STREET
 Nov. 27, 1888
 013

95
 B-29